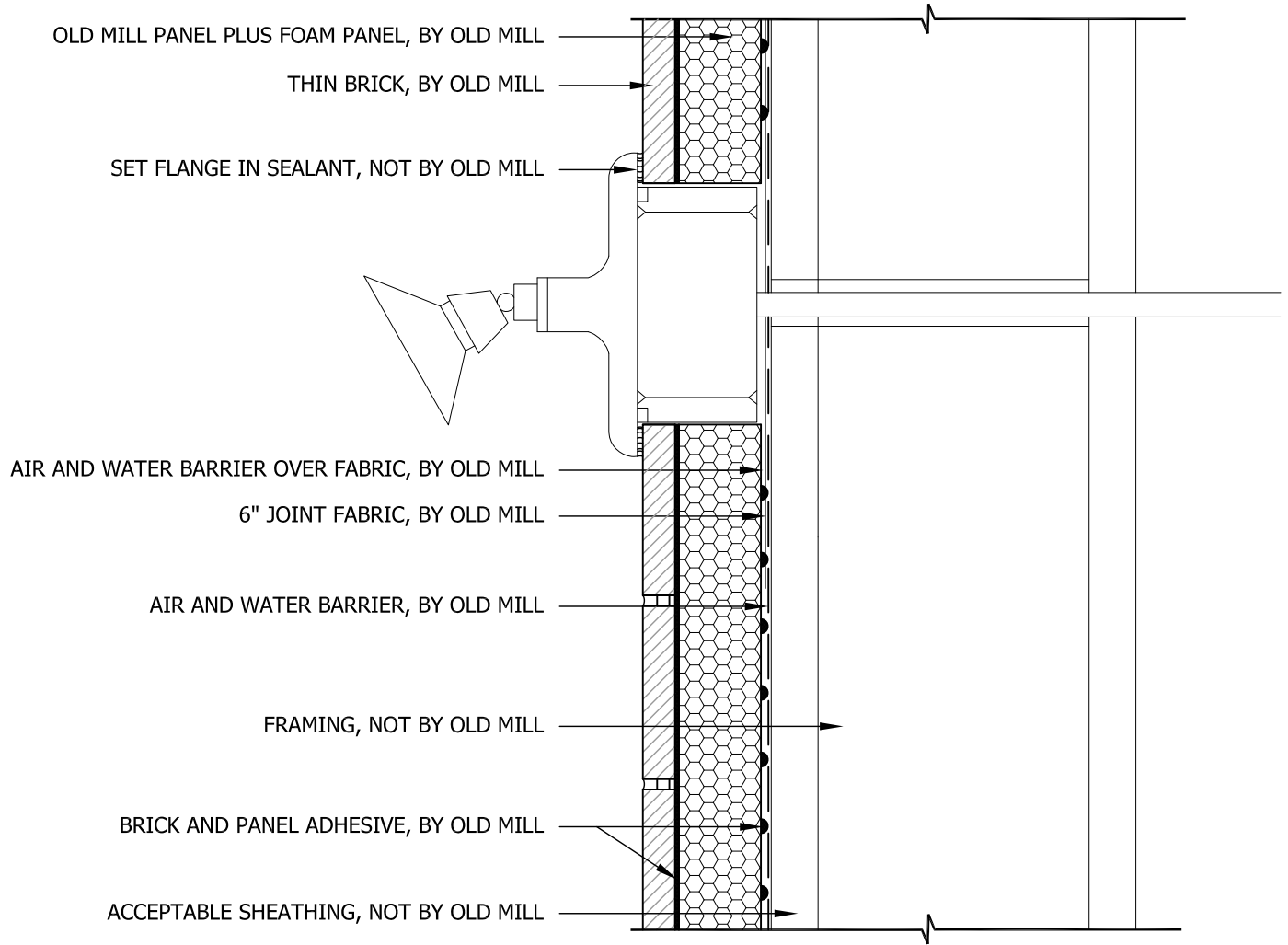


NOTE:

1. SEALANT AT PERIMETER OF PENETRATION



OMA-22 Typical Light Fixture (vertical)
Scale: N.T.S.

Rev. 4/4/2022

Reference only.

Old Mill Thin Brick should be installed according to the installation guide, ANSI standards and local building codes. Reputable installers and proper products, are required to achieve a complete installation. Wall systems beyond this product, shall be determined by the design professional.

