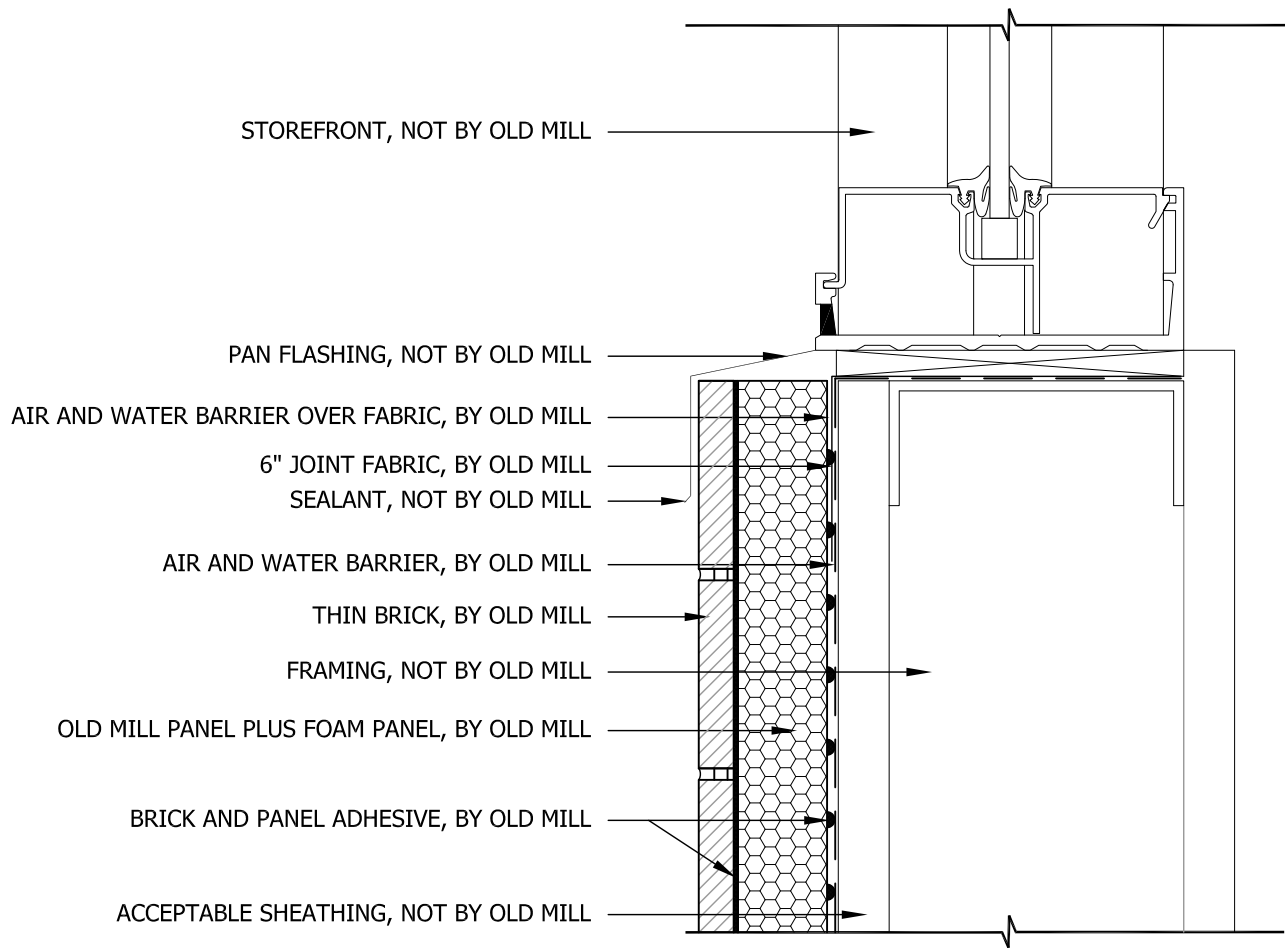


NOTE:

1. EXTEND FLASHING MIN. 50mm (2") OVER BRICK
2. FLASHINGS ARE BY OTHERS AND SHALL BE AS PER DESIGN/CODE REQUIREMENTS



OMA-14 Typical Window Sill Detail - Recessed (vertical)
Scale: N.T.S.

Rev. 4/4/2022

Reference only.

Old Mill Thin Brick should be installed according to the installation guide, ANSI standards and local building codes. Reputable installers and proper products, are required to achieve a complete installation. Wall systems beyond this product, shall be determined by the design professional.

