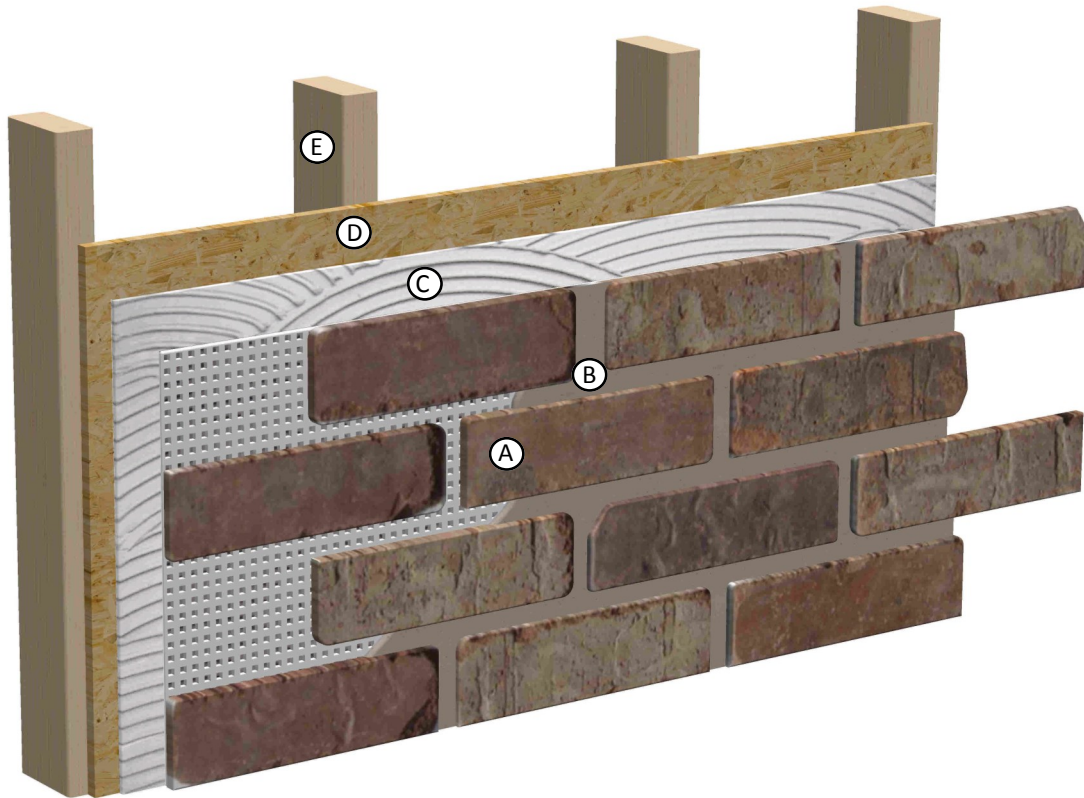


# Interior Wall Assembly

## Brickweb Over Wood Sheathing



- A - Brickweb Thin Brick Sheet:** Choose from a variety of color blends. Simply apply brickweb corners and flats by firmly pressing the brickweb into the adhesive. The adhesive should penetrate through the mesh to adhere to brick. Apply sheets by overlapping brick over the exposed webbing.
- B - Mortar:** Use grout bag and type S mortar mix or a sponge and tile grout to finish the areas between the bricks. Many different joint styles are available.
- C - Acrylic Tile Adhesive:** To adhere brickweb sheets to plywood, apply adhesive to the plywood using a 3/8" notched trowel. Only apply adhesive in a manageable area. We recommend using Mapei or Customs Building Products. Follow all manufacturer's instructions.
- D - Plywood Sheathing:** Plywood must be clean, flat, and structurally sound to receive adhesive and brickweb. Plywood must be 7/16" thick minimum.
- E- Studs:** Wood or metal studs with spacing of 16" on center maximum.

Prior to installation, check all local building codes and regulations.

To learn more about installation or to watch how-to videos, visit our website.



www.oldmillbrick.com

Brickweb is a patented product of Old Mill Brick

[www.installbrickweb.com](http://www.installbrickweb.com)