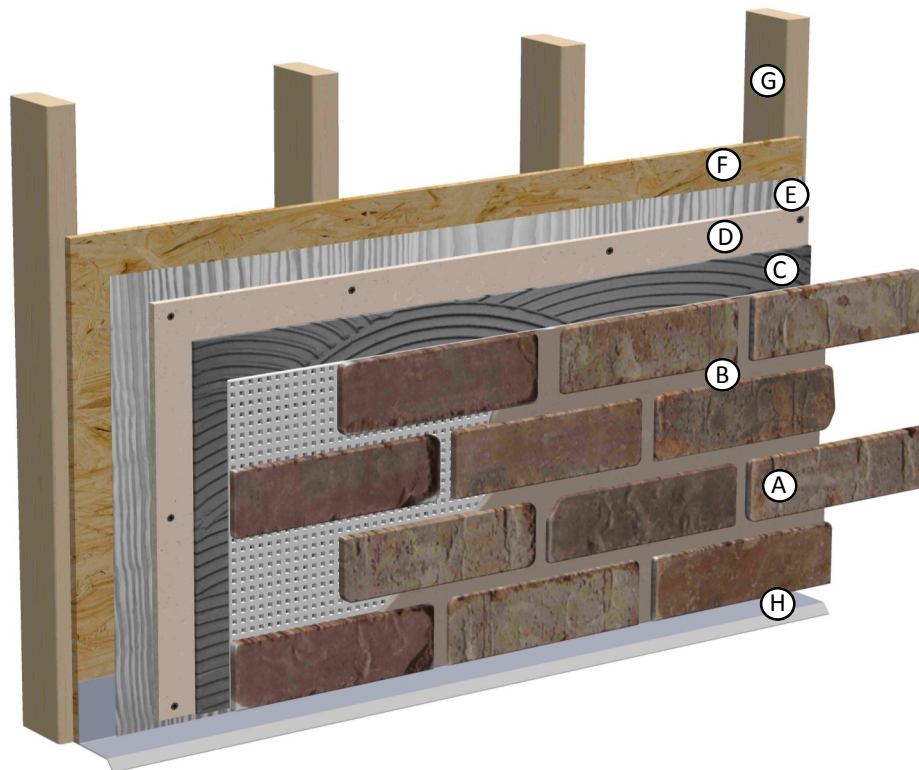


## Exterior Wall Assembly

### Brickweb Over Plywood Sheathing



- A - Brickweb Thin Brick Sheet:** Choose from a variety of color blends. Simply apply brickweb corners and flats by firmly pressing the brickweb into the adhesive. The adhesive should penetrate through the mesh to adhere to brick. Apply sheets by overlapping brick over the exposed webbing.
- B - Mortar:** Use grout bag and type S mortar mix or a sponge and tile grout to finish the areas between the bricks. Many different joint styles are available.
- C - Old Mill Adhesive:** To adhere brickweb sheets to the cement board, apply adhesive to the cement board using a 3/8" notched trowel. Only apply adhesive in a manageable area. Follow all manufacturer's instructions.
- D - Cement Board:** 1/2" cement board making sure it is secured down without flex or movement
- E - Old Mill Weather Barrier:** Apply weather barrier over sheathing. Follow all manufactures instructions.
- F - Plywood Sheathing:** Plywood must be clean, flat, and structurally sound to received adhesive and brickweb.
- G - Studs:** Wood or metal studs with spacing of 16" on center maximum.
- H - Flashing:** Allow for 1/8" gap between brick for moisture escape.

Prior to installation, check all local building codes and regulations.

To learn more about installation or to watch how-to videos, visit our website.



www.oldmillbrick.com

Brickweb is a patented product of Old Mill Brick

[www.installbrickweb.com](http://www.installbrickweb.com)